

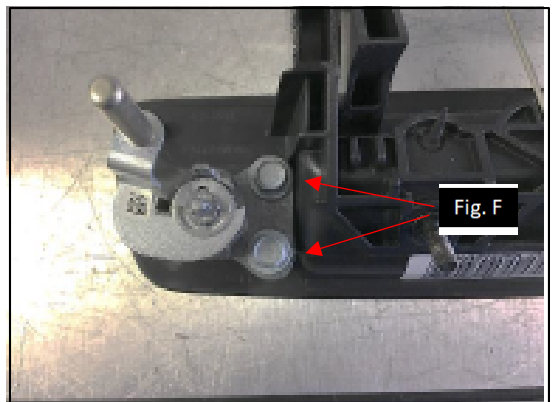
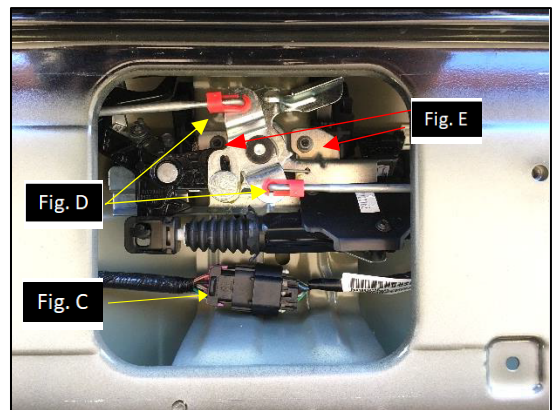
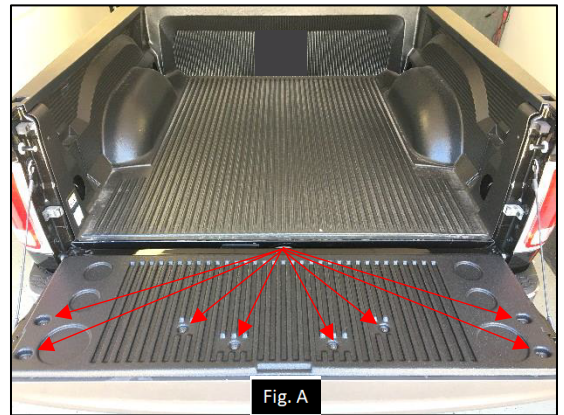


## TE-DGH

### Replacement Tailgate Handle with Camera

**Fits RAM 1500 (2009-2017)**

**Fits RAM 2500 (2010-2017)**



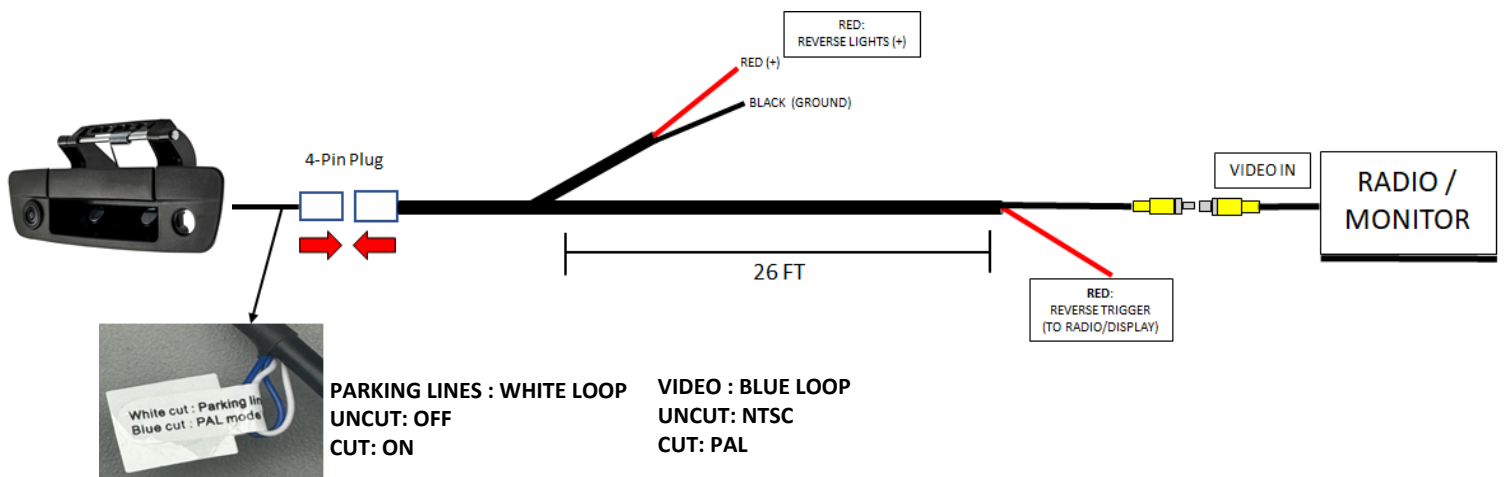
## Removal and Installation Instructions

### Tools Needed:

T30 Torx Bit  
Ratchet  
8mm Socket

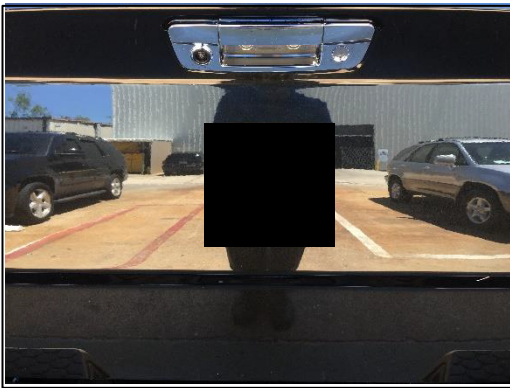
### DISSASSEMBLY

1. Start by lowering the tailgate and remove the (8) T30 torx screws from the bed liner, remove liner (Fig. A), remove access panel (Fig. B), and place aside.
2. Now that you have access to the handle assembly, disconnect harness running to lock actuator (Fig C) and unclip (2) latch rods. (Fig. D)
3. Next, remove (2) 8mm nuts located below latch connectors, then slide latch assembly aside. (Fig. E)
4. Gently remove handle by lifting the handle from the outside and slowly working it out.
5. Now that the handle is out of the tailgate, you will have to swap the locking mechanism out of the old handle to the new one.
6. Start by removing the (2) 8mm screws from locking mechanism, and then remove mechanism from handle. (Fig. F)
7. Now place the locking mechanism in the new handle and secure it with the factory 8mm screws.



## INSTALLATION

1. Connect the **WHITE** 4-pin harness from the handle into the extension harness.
2. Route the power harness from the 4-pin harness to the taillight location.
3. Remove the taillight and find the **12V POSITIVE** reverse wire.
4. Connect the wires:  
**RED** wire to the +12 volt reverse wire.  
**BLACK** wire to ground (a metal, non-painted surface)
5. Run the extension cable through vehicle up to video display, securing every 16".  
**Note:** Avoid placing video cable where it can get pinched or damaged.
6. Attach the **YELLOW** RCA to the **REVERSE CAMERA INPUT** of the video display.
7. Connect the **RED** wire to the display's **REVERSE TRIGGER**
8. After all the connections are made, test to make sure the video is working before securing the new handle.
9. Realign the handle's post with latch assembly opening mechanism and re-attach the 8mm nuts to secure the handle to the tailgate.
10. Reconnect the harness to the lock actuator
11. Reattach the tailgate access panel (Fig B) and bed liner (Fig A) with the T30 Torx screws



<b>Sensor</b>	CMOS ¼ sensor
<b>Resolution</b>	400 TV Lines
<b>Field of view</b>	Diagonal 168°, Horizontal 136°, Vertical 100°
<b>Illumination</b>	0.1 Lux
<b>IP rating</b>	IP69
<b>Parking Lines</b>	Defeatable
<b>Extension cable</b>	26'
<b>TV system</b>	NTSC
<b>Working Temp</b>	-20°C ~ 70°C
<b>Warranty</b>	3 years



386.257.1187

[www.iBeamUSA.com](http://www.iBeamUSA.com)

460 Walker Street, Holly Hill, FL 32117

REV 02-2026