



GM Data Interface with Amplifier Bypass Harness & DSP 2014-Up

INTERFACE FEATURES

- Designed for MOST amplifiers
- MOST data interface included
- AXDSP-X included
- Includes an amp bypass harness
- Retains factory chimes including parking sensor chimes
- Retains OnStar voice prompts
- All chimes/voice prompts go through the aftermarket amp
- Adjustable chime level
- Micro-B USB updatable

INTERFACE COMPONENTS

- AXDSP-X
- GM MOST interface
- AXBK-1
- AXDSPX-MST1 harness:
 - AXDSP-X harness (16-pin, 20-pin)
 - GM MOST interface harness (18-pin, 8-pin)
 - Amp bypass harness (16-pin black, 16-pin brown, 16-pin green, 8-pin)

APPLICATIONS

Chevrolet		Chevrolet (Cont'd)	
Camaro	2016-2018	Suburban	2015-Up
Colorado	2015-2018	Tahoe	2015-Up
Corvette	2014-2019	Traverse	2018
Cruze	2016-2018		
Equinox	2018		
Impala	2014-Up		
Malibu	2016-2018		
Silverado 1500	2014-2018		
Silverado 2500/3500	2015-2019		
Silverado LD	2019		
		GMC	
		Canyon	2015-2018
		Sierra 1500	2014-2018
		Sierra 2500HD/3500HD	2015-2018
		Sierra Limited	2019
		Yukon	2015-Up
		Yukon XL	2015-Up

TABLE OF CONTENTS

Connections	2
Installation	3-4
Troubleshooting	4

TOOLS & INSTALLATION ACCESSORIES REQUIRED

- Crimping tool and connectors, or solder gun, solder, and heat shrink
- Tape
- Wire cutter
- Zip ties
- Multimeter
- Tone generator

Google Play Store

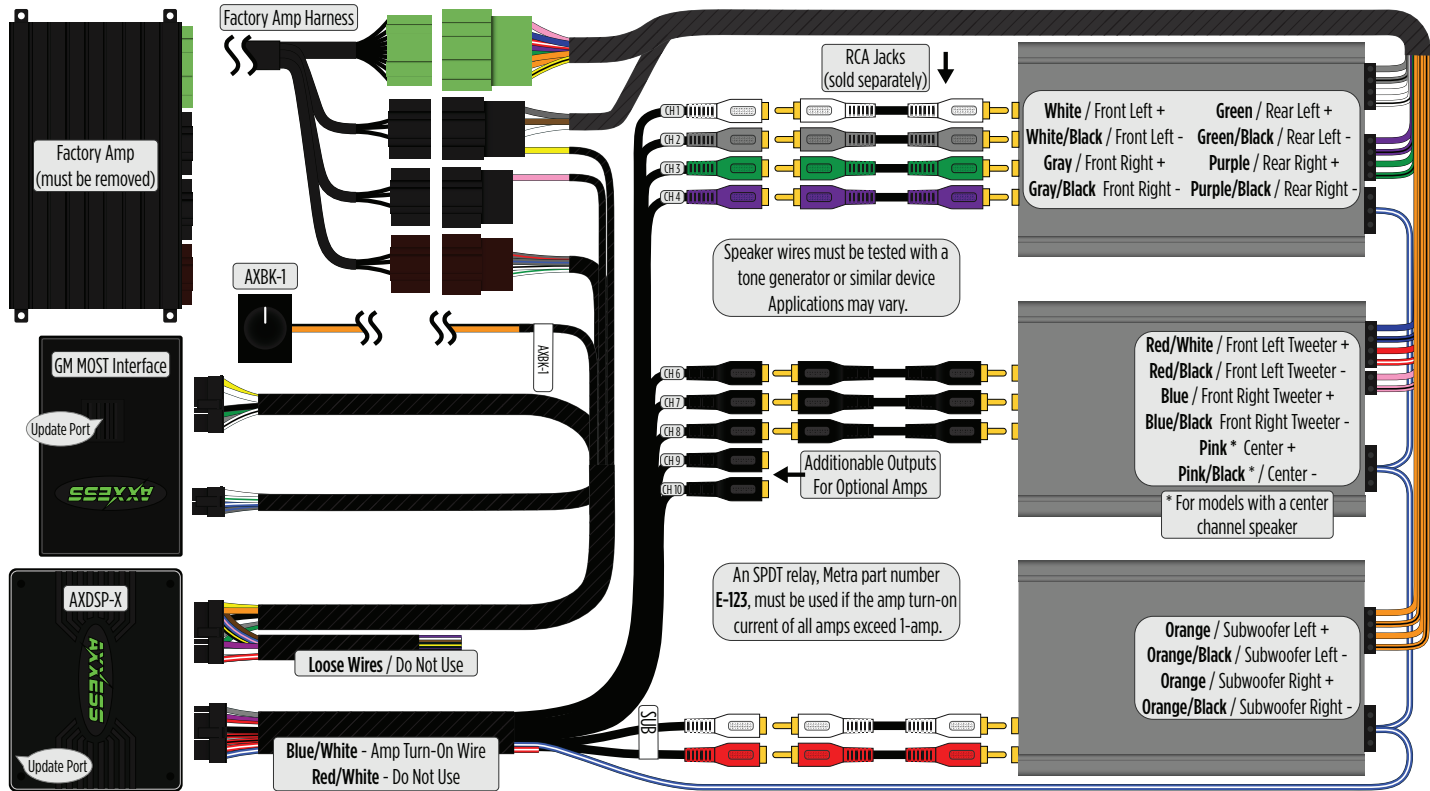


Apple App Store

iOS 12.1 or higher

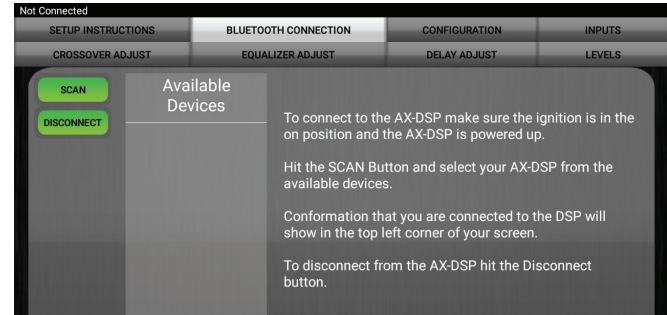


CONNECTIONS

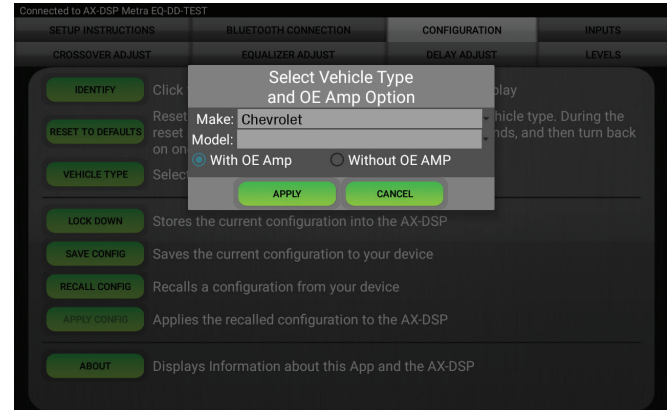


INSTALLATION

1. Locate the factory amp, unplug all connectors, then remove the amp.
Note: Amp location is on the following page.
2. Install the **AXDSPX-MSTI harness** and make all necessary connections, but leave the amp turn-on wire disconnected.
3. Plug the 8-pin and 18-pin connectors from the **AXDSPX-MSTI harness** into the **GM MOST interface**.
4. Plug the 16-pin and 20-pin connectors from the **AXDSPX-MSTI harness** into the **AXDSP-X**.
5. Download and install the AXDSP-X app from the **Google Play Store** or **Apple App Store**.
6. Open the app and follow the instructions on the **Bluetooth Connection** tab to pair the mobile device to the AXDSP-X. (Figure A)
7. Scroll to the **Configuration** tab then select the vehicle type. Press the **Lock Down** button to save the configuration. (Figure B)
8. Connect the amp turn-on wire from the **AXDSPX-MSTI harness**.
9. Click the **Identify** button to confirm that the AXDSPX-MSTI is connected properly. If so, a chime will be heard from the front left speaker. Test all functions of the installation for proper operation.
Note: The outputs may need to be configured within the **Outputs** tab.
10. Adjust the DSP settings in the app as desired. Refer to the instructions under the **Setup Instructions** tab, or online at Axxessinterfaces.com for an explanation of each tab in the app.



(Figure A)



(Figure B)

INSTALLATION (CONT'D)

Amplifier Location

Chevrolet

Camaro: Right side of trunk

Colorado: Behind glove-box

Corvette: Middle of luggage compartment floor

Cruze: Right side of trunk

Equinox: Front of center console

Impala: Right side of luggage compartment

Malibu: Right side of trunk

Silverado: Rear of passenger compartment, behind seat

Suburban: Rear left side quarter panel

Tahoe: Rear left side quarter panel

Traverse: Front of center console

GMC

Canyon: Behind glove-box

Sierra: Rear of passenger compartment, behind seat

Yukon: Rear left side quarter panel

Yukon XL: Rear left side quarter panel

TROUBLESHOOTING

- If the **Red** light in the **GM MOST interface** is blinking, it is not communicating to the vehicle. Remove the key from the ignition, unplug the connectors from the interface, and then inspect all connections made. If everything is proper, connect the harnesses back into the interface, cycle the key to ignition, then re-inspect. The **Red** light should now be solid.

Having difficulties? We're here to help.



Contact our Tech Support line at:

386-257-1187



Or via email at:

techsupport@metra-autosound.com

Tech Support Hours (Eastern Standard Time)

Monday - Friday: 9:00 AM - 7:00 PM

Saturday: 10:00 AM - 7:00 PM

Sunday: 10:00 AM - 4:00 PM



KNOWLEDGE IS POWER

Enhance your installation and fabrication skills by enrolling in the most recognized and respected mobile electronics school in our industry. Log onto www.installerinstitute.com or call 800-354-6782 for more information and take steps toward a better tomorrow.



Metra recommends MECP certified technicians