



Visit AxxessInterfaces.com for more detailed information about the product and up-to-date vehicle specific applications

INTERFACE COMPONENTS

- AXAC-FD1 interface
- AXAC-FD1 interface harness
- AXAC-FD1 vehicle harness (qty. 2)
 - 12-pin T-harness
 - 54-pin T-harness

APPLICATIONS (see next page)

Camera Data Interface w/Pre-Wired Harness Fits Select Ford Models **2011-2023***

*With either a 4.2-inch, 6.5-inch, or 8-inch display screen

Note: Only compatible with NTSC cameras.

INTERFACE FEATURES

- Add multiple CAN-activated cameras with 4 camera inputs
- Includes AXAC camera interface and vehicle-specific harness
- Programmable 12-volt 5-amp switched output (configured through the Axxess Updater program)
- Reverse signal trigger generated via CAN bus communication of the vehicle
- Turn signal trigger generated via CAN bus communication of the vehicle
- 4 programmable camera control wires (configured through the Axxess Updater program)
- Can also be manually controlled and used along with an aftermarket radio
- VSS (Vehicle Speed Sense) input and output
- Micro "B" USB updatable

TOOLS REQUIRED

- Crimping tool and connectors, or solder gun, solder, and heat shrink
- Tape
- Wire cutter
- Zip ties

Product Info



TABLE OF CONTENTS

Introduction	2
Applications	2
Configuration	2-5
Connections	6
Installation	7
Programming	7

REQUIRED ITEMS

Update Cable: AXUSB-MCBL (sold separately)

Supplemental Harness*:

AX-ADDCAM-FDSTK (sold separately)

Axxess Updater Program

*2014-Up models with 4.2-inch display screen only

ATTENTION: With the key out of the ignition, disconnect the negative battery terminal before installing this product. Ensure that all installation connections, especially the air bag indicator lights, are plugged in before reconnecting the battery or cycling the ignition to test this product.

NOTE: Refer also to the instructions included with the aftermarket radio.

INTRODUCTION

The **AXAC-FD1** is a camera switching interface that provides:

- A front camera, and/or side cameras that can be added to the factory radio.
- Up to (3) additional camera inputs to the factory radio, while still retaining the factory camera.
- Automatic camera function, no human interaction is required, unless desired.
- Up to (4) cameras, if the vehicle doesn't come equipped with a backup camera.

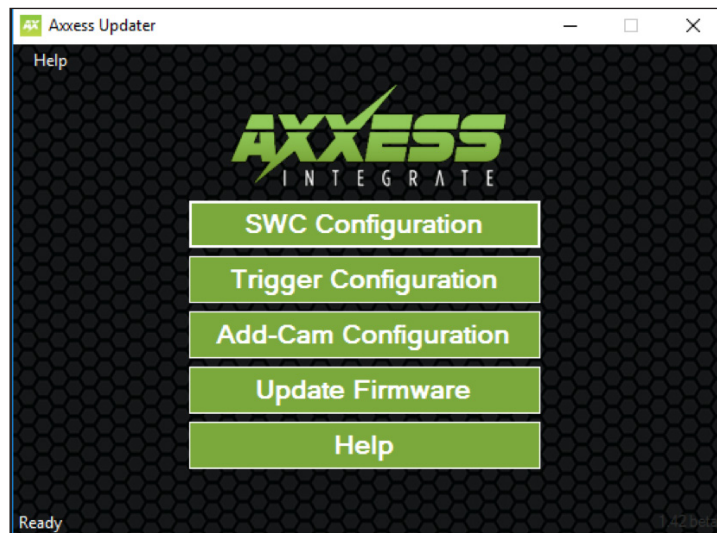
Note: Axxess recommends cameras from the iBEAM product line for best results.

APPLICATIONS

Ford

Bronco Sport	2022-2023
Bronco	2022-2023
Escape 4.2" / 8" (or 6.5") Display Models.....	2013-2022
Edge 4.2" / 8" (or 6.5") Display Models.....	2011-2020
F-150/250 4.2" / 8" (or 6.5") Display Models	2013-2020
Focus 4.2" / 8" (or 6.5") Display Models.....	2012-2018
Fusion 4.2" / 8" (or 6.5") Display Models	2013-2019
Maverick 4.2" / 8" (or 6.5") Display Models	2022-2023
Mustang	2015-2023
Ranger 4.2" / 8" Display Models	2019-2023
Transit 4.2" / 6.5" Display Models	2014-2018
Transit Connect 4.2" / 8" (or 6.5") Display Models.....	2015-2018

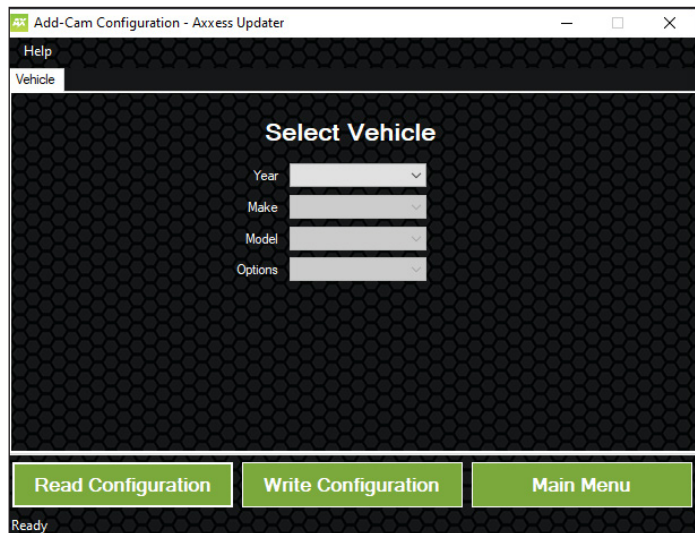
CONFIGURATION



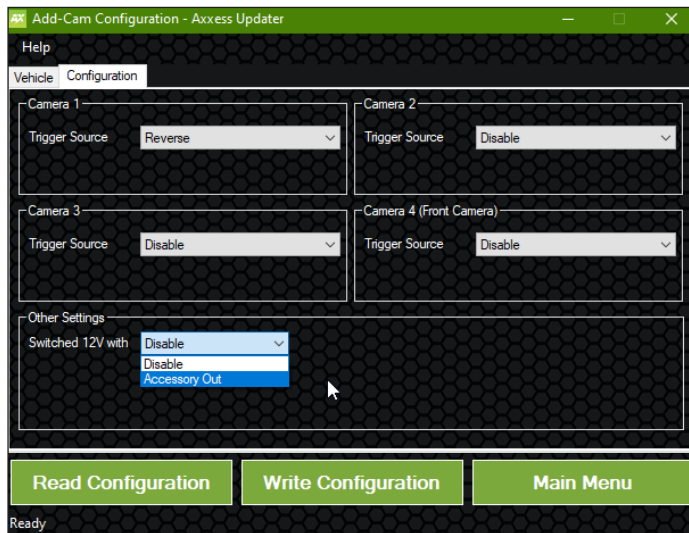
- Download and install the **Axxess Updater** available at: AxxessInterfaces.com
- Connect the **AXUSB-MCBL** update cable (sold separately) between the interface and the computer. The cable will connect into the micro-B USB port in the interface.
- Open the **Axxess Updater** and wait until the word **"Ready"** is listed in the bottom left of the screen.
- Select **Add-Cam Configuration**.

Continued on the next page

CONFIGURATION (CONT.)



- Select the vehicle in the drop down list. A tab labeled **Configuration** will appear after the vehicle has been selected.



- Under **Configuration**, configure the (4) video trigger inputs to the desired settings.*
- Once all selections have been configured, press **Write Configuration** to save the settings.
- Unplug the update cable from the interface and computer.
*Refer to the next page for more information.

Continued on the next page

Video trigger legend

- Disable (will turn off the input)
- Backup Camera (dedicated backup camera)
- Left Blinker (will be used for activation)
- Right Blinker (will be used for activation)
- Control 1 (positive trigger activation)
- Control 1 (negative trigger activation)
- Control 2 (positive trigger activation)

- Control 2 (negative trigger activation)
- Control 3 (positive trigger activation)
- Control 3 (negative trigger activation)
- Control 4 (positive trigger activation)
- Control 4 (negative trigger activation)
- Auto (Reverse -> Drive) will activate once that sequence is seen.

Note: Only available for video trigger 4.

Video trigger description

- **Reverse camera:** Dedicated by default to **Video Trigger 1**. Will activate the backup camera while the vehicle is in reverse.
- **Left blinker:** Activation of the left turn signal will activate the left camera.
- **Right blinker:** Activation of the right turn signal will activate the right camera.
- **Auto (reverse -> drive):** Available only for **Video Trigger 4**, when installing a front camera. With this feature selected, the camera will activate automatically once a reverse-then-drive sequence is seen from the vehicle. Example of this scenario would be while parallel parking the vehicle. As an alternative, a control wire can be used instead to manually activate the camera.

Note: Auto (Reverse -> Drive) will disable the camera once 15 MPH is reached. A control wire activated will also disable the camera.

Note: If the control wire is activated while driving, the camera will activate and deactivate during stop-and-go traffic.

- **Control 1-4 (positive or negative) trigger activation wires:** Can be used as a positive or negative trigger to manually activate a camera via a toggle switch, or similar device.

Other Settings

Switched 12v with

- **Disable:** Turns off the 12v from the camera 12v (**Red**) wire
- **Accessory Out:** Accessory Out:

Other settings

Switched 12V with

- **Disable:** On by default.
- **Accessory Out:** 12-volt out when CAN data is detected.
- **Camera Active:** 12-volt of a camera has been activated. *

VSS out Function

- **Disable:** On by default.
- **Camera Active:** Active while camera is on.

Continued on the next page

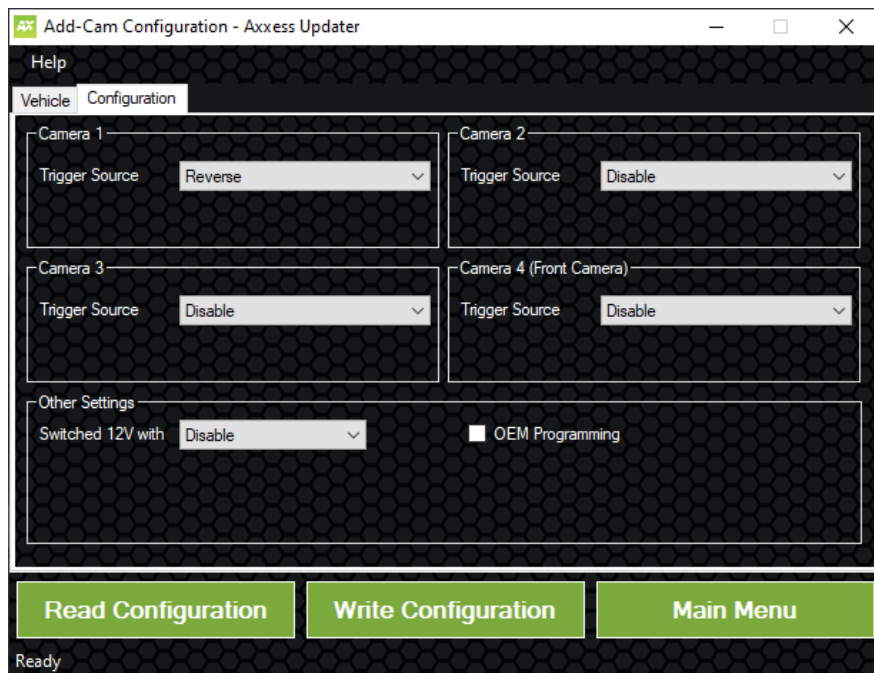
CONFIGURATION (CONT.)

Configuration for models without a factory camera:

- Configure the **AXAC-FD1** in the Axxess Updater first. In the Axxess Updater there will be an option box labeled **“OEM Programming”** under the **“Configuration”** tab after the vehicle type has been entered. Check this box to allow the **AXAC-FD1** to configure the camera settings for the vehicle. (Figure A)
- Turn the key (or push-to-start button) to the ignition position and wait until the L.E.D. inside the **AX-ADDCAM interface** comes on. The radio will reboot and may show a diagnostic screen during this process.

Note: If the L.E.D. in the interface doesn't come on within a few seconds, yet blinks instead, turn the key to the off position, disconnect the interface, check all connections, reconnect the interface, and then try again.

Note: Ensure that the **Video 1 input** in the interface is set to “reverse camera”.



(Figure A)

CONNECTIONS

Attention! Two different harnesses are provided, one for models with a 4.2-inch display screen radio (12-pin T-harness), the other for models with an 8-inch display screen radio (54-pin T-harness). Use the appropriate harness and discard the other. The harness will connect at the display screen.

For models with a factory backup camera, the camera's signal will need to be interrupted and reconnected:

- Connect the RCA jack from the **AXAC-FD1 vehicle harness** labeled “**Camera input**”, to the RCA jack from the **AXAC-FD1 interface harness** labeled “**Camera output**”.
- Connect the RCA jack from the **AXAC-FD1 vehicle harness** labeled “**Camera output**”, to the RCA jack from the **AXAC-FD1 interface harness** labeled “**Camera 1**”.
- Disregard the following (3) wires: **Blue/Green, Green/Blue, Red**

For models without a factory backup camera:

- Connect the RCA jack from the **AXAC-FD1 vehicle harness** labeled “**Camera input**”, to the RCA jack from the **AXAC-FD1 interface harness** labeled “**Camera output**”.
- Connect the RCA jack from the **AXAC-FD1 interface harness** labeled “**Camera 1**”, to the aftermarket backup camera.
- Disregard the RCA jack labeled “**Camera output**” from the **AXAC-FD1 vehicle harness**.
- Connect the **Red** wire from the **AXAC-FD1 interface harness** labeled “**Camera 12V**”, to the power wire from the aftermarket backup camera.
- Disregard the following (2) wires: **Blue/Green, Green/Blue**

Camera Input:

Camera 1	Backup camera input
Camera 2	Left or right camera, user assignable
Camera 3	Left or right camera, user assignable
Camera 4	Front camera

Analag control trigger wires:

The (optional) analog control wire can be used with either a negative or positive trigger, depending on how it is configured in the Axxess Backup Camera Updater. This wire will only be used for manual control of the camera, otherwise disregard the wire.

Control Wire	Wire Color
Control 1	Gray/Blue
Control 2	Gray/Red
Control 3	Orange
Control 4	Orange/White

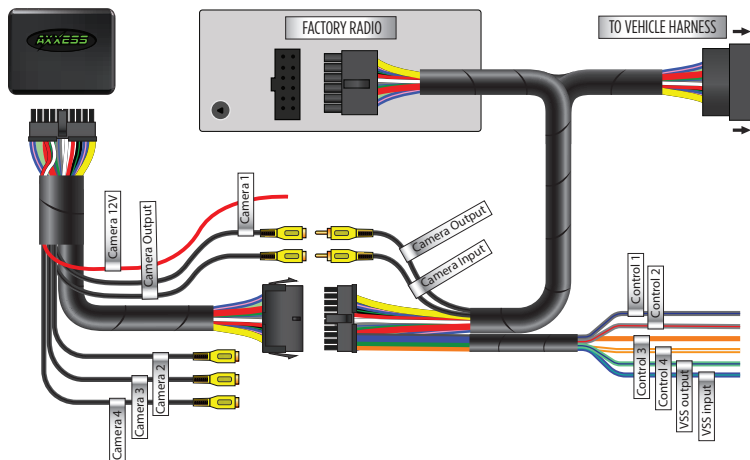
Blue/Black and Blue/Red input wires (12-pin T-harness):

These wires are only for use with the **AXAC-FDSTK** (sold separately) for 2014-Up models. Refer to the **AXAC-FDSTK** instructions for wiring.

INSTALLATION

With the ignition cycled off:

1. Remove the harness from the factory radio display, then install the **AXAC-FD1 vehicle harness** in between.
2. Connect the **AXAC-FD1 vehicle harness** to the **AXAC-FD1 interface harness**.
3. Connect the **AXAC-FD1 interface harness** to the **AXAC-FD1 interface**.
4. Make sure the camera(s) is connected to the appropriate input.
5. Make sure the interface has been configured beforehand as shown in the Configuration section. Failure to configure the interface will result in the interface not functioning properly.



PROGRAMMING

1. Cycle the ignition on and wait until the LED in the interface comes on.

Note: If the LED doesn't come on within a few seconds, yet blinks instead, turn the key to the off position, disconnect the interface, check all connections, reconnect the interface, and then try again.

2. Test all functions of the installation for proper operation.



AXAC-FD1

INSTALLATION INSTRUCTIONS



Having difficulties? We're here to help.



Contact our Tech Support line at:

386-257-1187



Or via email at:

techsupport@metra-autosound.com

Tech Support Hours (Eastern Standard Time)

Monday - Friday: 9:00 AM - 7:00 PM

Saturday: 10:00 AM - 5:00 PM

Sunday: 10:00 AM - 4:00 PM



**Metra recommends MECP
certified technicians**