



## Ford Stop/Start Override Interface 2015-up

### INTERFACE FEATURES

- Allows the override of the STOP/START engine feature
- The factory STOP/START button can resume the STOP/START feature
- Can be used with either a factory or aftermarket radio
- Vehicle type configured through the Axxess Updater software program
- Simple plug n' play installation, no wiring required

### INTRODUCTION

The AX-FD-SSO is designed to disengage the STOP/START feature of the vehicle, and keep that feature disengaged even after the key has been cycled. The AX-FD-SSO will work with either an aftermarket radio, or a factory radio. A simple plug n' play installation is all that is required to install the device in the vehicle, and programming through a Windows 10 computer via the [Axxess Updater](#) software program.

### APPLICATIONS

#### Ford

Edge	2015-up	Focus	2016-up
Escape	2017-up	Fusion	2015-up
F-150	2015-up		

### TABLE OF CONTENTS

Programming.....	2
Connections.....	3
Operation.....	4

### INTERFACE COMPONENTS

- AX-FD-SSO interface
- AX-FD-SSO harness (qty. 2)

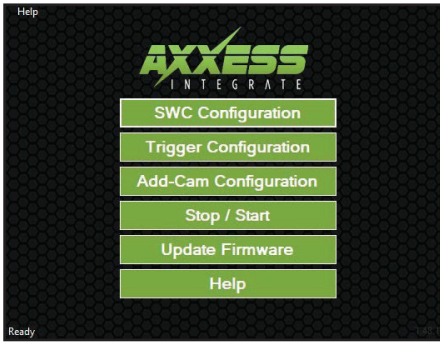
### TOOLS & INSTALLATION ACCESSORIES REQUIRED

- Zip ties • Cutters (for zip ties)
- Micro-B USB cable  
(Axxess part number **USB-MINI-CAB**)

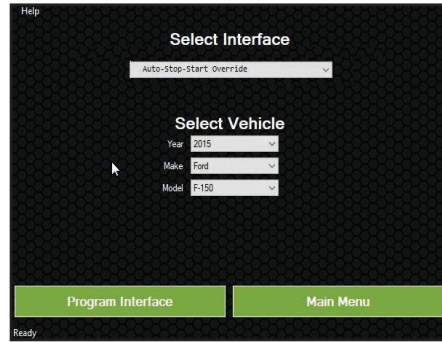
### Product Info



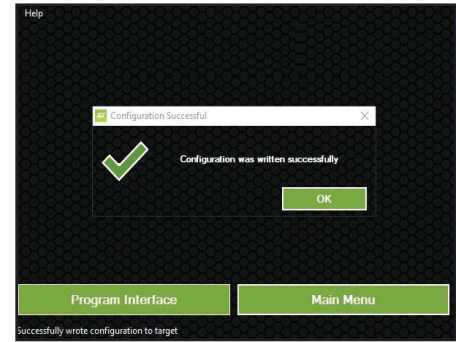
# PROGRAMMING



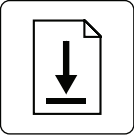
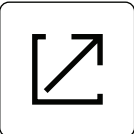
(Figure A)

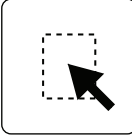



(Figure B)



(Figure C)

-  Download and install the **Axxess Updater** software program from: [axcessinterfaces.com/resources/updater-software](http://axcessinterfaces.com/resources/updater-software)
-  Connect the micro-B USB cable (sold separately) to the computer and AX-FD-SS0 interface. Open the **Axxess Updater** software program and wait until the word **Ready** is shown in the bottom left of the screen. Select **Stop / Start**. (Figure A)

-  On the next screen that opens, select the year, make, and model of the vehicle, then press **Program Interface**. (Figure B)
-  When the **Configuration Successful** box pops up, the programming process is complete. (Figure C)

*Continue to Installation*

# INSTALLATION

These vehicles will connect to the wiring harness located at the climate control location.

## Ford

F-150 2015-up

- Disassembly instructions: [metraonline.com/part/99-5834CH](http://metraonline.com/part/99-5834CH)

Fusion 2015-up

- Disassembly instructions: [metraonline.com/part/99-5841B](http://metraonline.com/part/99-5841B)

Edge 2015-up

- Disassembly instructions: [metraonline.com/part/99-5851CH](http://metraonline.com/part/99-5851CH)

### From the wiring harness in the vehicle behind the radio:

1. Unplug the connector behind the climate control.
2. Plug the AX-FD-SSO harness in between the **climate control** and **climate control harness**.
3. Plug the AX-FD-SSO harness into the AX-FD-SSO interface.



These vehicles will connect at the OBD2 connector, inside the driver's side dashboard.

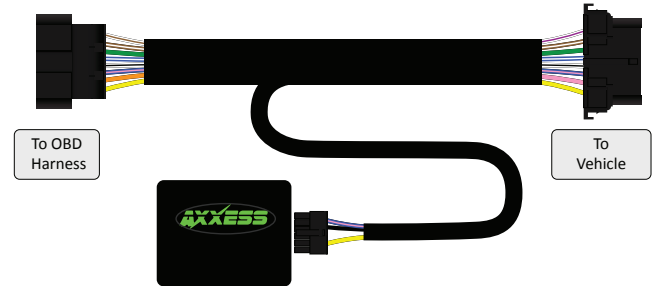
## Ford

Focus 2016-up

Escape 2017-up

### From the OBD connector in the dash

1. Unclip the factory OBD connector from the dash.
2. Plug the AX-FD-SSO harness to the OBD connector.
3. Clip in the AX-FD-SSO harness to the dash.
4. Plug the AX-FD-SSO harness into the AX-FD-SSO interface.
5. Zip tie the harness securely under the dash to avoid it from coming down.



### OPERATION

#### Re-engaging the STOP/START feature

1.  Press the factory STOP/START button to re-engage the STOP/START feature.

Having difficulties? We're here to help.



Contact our Tech Support line at:

**1-800-253-TECH**



Or via email at:

[techsupport@metra-autosound.com](mailto:techsupport@metra-autosound.com)

#### Tech Support Hours (Eastern Standard Time)

Monday - Friday: 9:00 AM - 7:00 PM

Saturday: 10:00 AM - 7:00 PM

Sunday: 10:00 AM - 4:00 PM



#### **KNOWLEDGE IS POWER**

Enhance your installation and fabrication skills by enrolling in the most recognized and respected mobile electronics school in our industry. Log onto [www.installerinstitute.com](http://www.installerinstitute.com) or call 800-354-6782 for more information and take steps toward a better tomorrow.



**Metra recommends MECP  
certified technicians**