



Chrysler Stop/Start Override Interface 2015-Up

INTERFACE FEATURES

- Allows the override of the STOP/START engine feature
- The factory STOP/START button can resume the STOP/START feature
- Can be used with either a factory or aftermarket radio
- Vehicle type configured through the Axxess Updater software program
- Simple plug n' play installation, no wiring required

INTRODUCTION

The AX-CH-SSO is designed to disengage the STOP/START feature of the vehicle, and keep that feature disengaged even after the key has been cycled. The AX-CH-SSO will work with either an aftermarket radio, or a factory radio. A simple plug n' play installation is all that is required to install the device in the vehicle, and programming through a Windows 10 computer via the [Axxess Updater](#) software program.

APPLICATIONS

Chrysler	Dodge	Jeep
Pacifica	Durango	Cherokee
2018-Up		Grand Cherokee
		Wrangler (JK)
		Wrangler (JL)

TABLE OF CONTENTS

Programming.....	2
Connections.....	3
Operation.....	4

INTERFACE COMPONENTS

- AX-CH-SSO interface
- AX-CH-SSO harness (qty. 2)

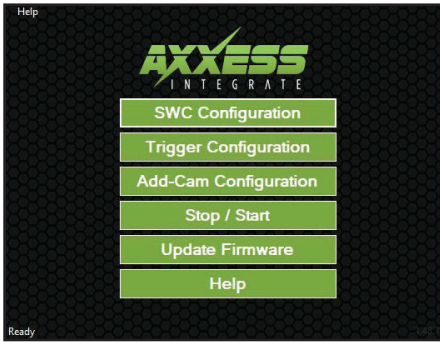
TOOLS & INSTALLATION ACCESSORIES REQUIRED

- Zip ties • Cutters (for zip ties)
- Micro-B USB cable
(Axxess part number **USB-MINI-CAB**)

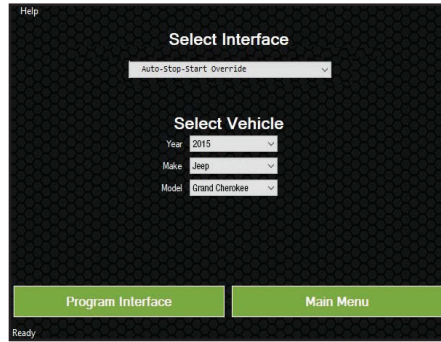
Product Info



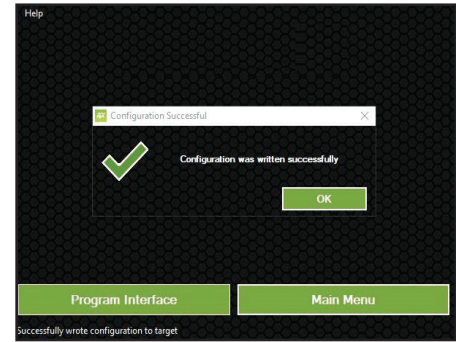
PROGRAMMING



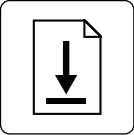
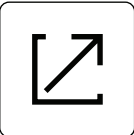
(Figure A)

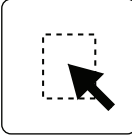



(Figure B)



(Figure C)

-  Download and install the **Axxess Updater** software program from: axcessinterfaces.com/resources/updater-software
-  Connect the micro-B USB cable (sold separately) to the computer and AX-CH-SSO interface. Open the **Axxess Updater** software program and wait until the word **Ready** is shown in the bottom left of the screen. Select **Stop / Start**. (Figure A)

-  On the next screen that opens, select the year, make, and model of the vehicle, then press **Program Interface**. (Figure B)
-  When the **Configuration Successful** box pops up, the programming process is complete. (Figure C)

Continue to Installation

INSTALLATION

These vehicles will connect to the wiring harness located at the radio location.

Chrysler

Pacifica 2017

- Disassembly instructions: metraonline.com/part/99-6543HG

Dodge

Durango 2016-up

- Disassembly instructions: metraonline.com/part/99-6537B

Jeep

Cherokee 2016-up

- Disassembly instructions: metraonline.com/part/99-6518B

Grand Cherokee 2015-up

- Disassembly instructions: metraonline.com/part/99-6536S

Wrangler (JK) 2018

- Disassembly instructions: metraonline.com/part/95-6511

From the wiring harness in the vehicle behind the radio:

1. Unplug the main connector from the radio.
2. Plug the AX-CH-SSO harness in between the **radio** and **radio harness**.
3. Plug the AX-CH-SSO harness into the AX-CH-SSO interface.



These vehicles will connect to the hazard switch in the dashboard.

Chrysler

Pacifica 2018-up

- Disassembly instructions: metraonline.com/part/99-6543HG

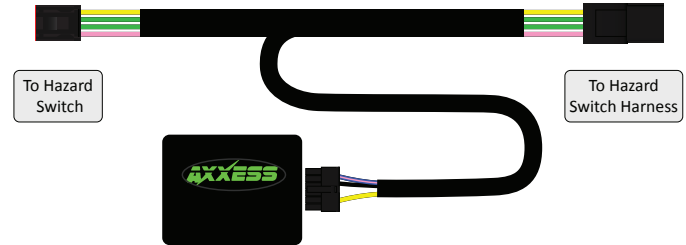
Jeep

Wrangler (JL) 2018-up

- Disassembly instructions: metraonline.com/part/107-CH3B

From the hazard switch:

1. Unplug the connector from the hazard switch.
2. Plug the AX-CH-SSO harness in between the **hazard switch** and **hazard switch harness**.
3. Plug the AX-CH-SSO harness into the AX-CH-SSO interface.



OPERATION

Re-engaging the STOP/START feature

1.  Press the factory STOP/START button to re-engage the STOP/START feature.

Having difficulties? We're here to help.



Contact our Tech Support line at:

1-800-253-TECH



Or via email at:

techsupport@metra-autosound.com

Tech Support Hours (Eastern Standard Time)

Monday - Friday: 9:00 AM - 7:00 PM

Saturday: 10:00 AM - 7:00 PM

Sunday: 10:00 AM - 4:00 PM



KNOWLEDGE IS POWER

Enhance your installation and fabrication skills by enrolling in the most recognized and respected mobile electronics school in our industry. Log onto www.installerinstitute.com or call 800-354-6782 for more information and take steps toward a better tomorrow.



Metra recommends MECP certified technicians