



LED WIFI CONTROLLER
HE-WFRGBC-1

I. Product model: HE-WFRGBC-1



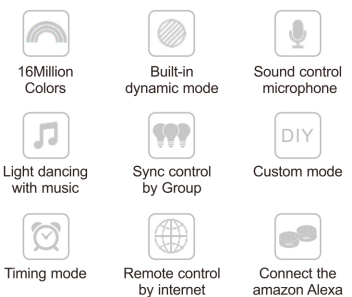
①

II. Product specification:

Product category: LED constant pressure controller (DC)
Product name: MINI IR 24 key WIFI controller
Product number: HE-WFRGBC-1
Control principle: WIFI
APP type: Magic Home Pro
Mobile version: Android4.0 / IOS9.0
LED drive types: constant voltage
Channel: RGB/RGBW/RGBWC
Input voltage: DC5-28V
Output current: 4A/CH
Application range: low voltage lamp, panel lamp, etc.
Constant pressure drive product
Connect method: Common anode
Waterproof level: IP20
Working temperature: -20 To + 55 degrees Celsius
Control distance: empty barrier-free distance: 50 meters, obstacle distance: 20 to 25 meters
Product certification: CE ROHS FCC
Product size: 53mm*24mm*11mm(length * width * height)
Product box size: 130mm*90mm*18mm(length * width * height)
Net weight: 17.5g / 18g / 18.5g
Product gross weight (including packaging) : 42g / 42.5g / 43g

②

III. Product features:



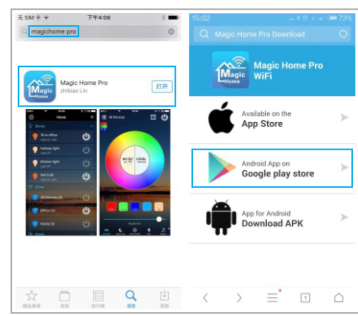
- Support for 16 million kinds of color and brightness adjustment control
- Channel: RGB/RGBW/RGBWC
- Support for color and dynamic mode customization and preservation
- Group synchronization control function
- The switch time, static, and dynamic display of the light can be set
- Lights and music sync functions
- A variety of built-in dynamic model, and the custom dynamic model

③

- Remote control function
- The microphone sound control function
- The camera takes the background color and the setting of the scene

IV. Mobile APP installation instructions:

- Product software APP name: Magic Home Pro
a. Apple users can search "Magic Home Pro" in "APP Store"; Android users can search "Magic Home Pro" in "Google Play Store" or from browsers. The APP is free to download and use.



④

- Scan the QR code below to download and install the APP for free. (Please click "open the web link from the browser" when you use Wechat to scan the QR code, for the Wechat itself has no browser function.)



Scan the QR code to download the APP

V. Usage description:

- Please use this product in a dry environment
- Please use the voltage for dc current of dc12-24v, and not to use 220V alternating current.
- The product is a common anode connection. After installed the WIFI controller, open mobile WIFI network signal, find "LEDnet *****" signal and

⑤

connect, open the Magic Home Pro APP, there are three kinds of connection mode to connect the controller

The first: choose to connect directly to the controller; enter the APP control interface.

The second: choose to connect to the router, write the router password, mobile phone choose to connect the router network signal, open the Magic Home Pro APP, enter the software APP control interface

The third: choose to connect the router and keep the router in a network connection, remote control can be performed

Common problem analysis:

1. How to set up with Alexa?

To work with Alexa, Make sure you registered an account from app and had connected wifi LED Controller to your router.

Then please add the skill named "Magic Home" from Alexa App and login with your Account. Then Alexa will discovery your new devices under SmartHome, and now succeeded.

Note: Currently wifi LED Controller can only support ON/OFF via Alexa voice control. We will develop the color changing & dimming skill skill in the near further.

⑥

See Alexa Skill of Magic Home : <https://www.amazon.com/gp/product/B01HFZ9IAK>

2. The controller cannot connect to the router?

Answer: please check if the router password is correct; if it is correct while the controller still fail to connect to the router, please shut down the controller and the router; then turn on the router first and then turn on the controller after 30s. You can run the APP around 2 minutes later. If the problem remains after above operation, please restore factory settings.

3. How to restore factory setup?

The physical switch controller four times (the APP helps with a detailed diagram) operates as follows:

In the case of the shutdown controller state:

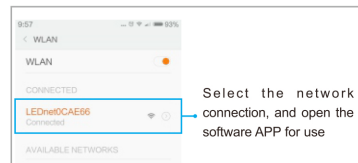
- The first time you connect the controller, wait for 1 to 3 seconds and then turn off the controller.
- The second time you connect the controller, wait for 1 to 3 seconds and then turn off the controller.
- The third time you connect the controller, wait for 1 to 3 seconds and then turn off the controller.
- The fourth time you connect the controller, the lamp or light bar that connects the controller will flicker quickly a few times, indicating that the controller has restored the factory settings successfully.

⑦

VI. The android operating interface instructions:

In the use of the APP, please make sure that the controller circuit and power supply is normal connection.

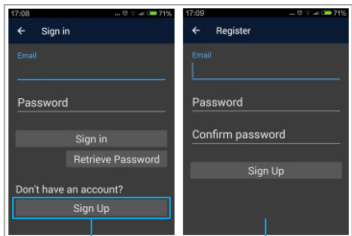
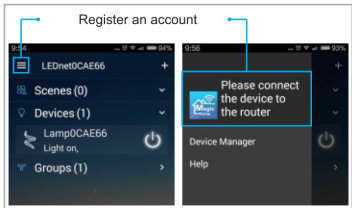
- a) Single connection: do not need to register account, open cell phone WIFI network, find "LEDnet *****" signal and connect.



- b) Add the controller's signal to the router for connection control.

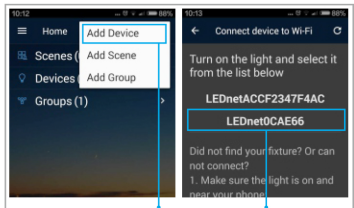
When registering the account, please connect the controller's WIFI signal to the router (make sure the network is accessible)

⑧

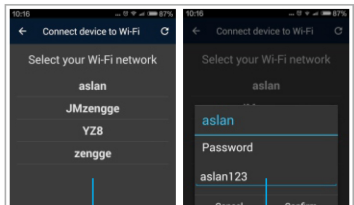


If you have a account and password, you can choose to login directly, if not, you can choose to register your new account.

⑨

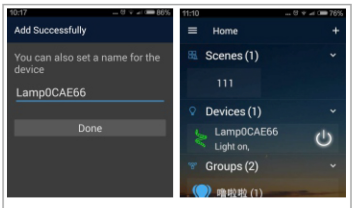


Select the WIFI controller that you need to add to the router.



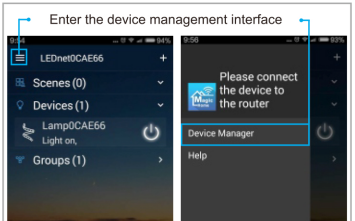
Select the router that needs to be connected and enter the password.

⑩

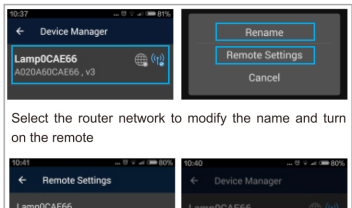


c) Remote connection settings

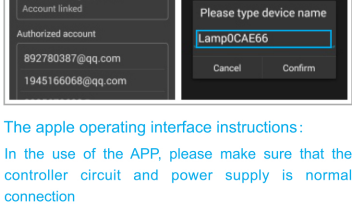
When making remote Settings, make sure the account is logged in properly



⑪

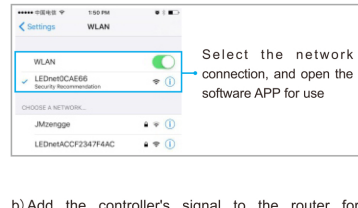


Select the router network to modify the name and turn on the remote



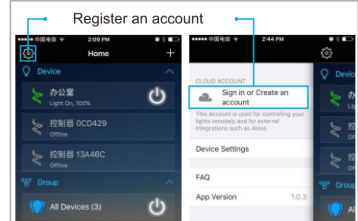
a) Single connection: do not need to register account, open cell phone WIFI network, find "LEDnet *****" signal and connect.

⑫

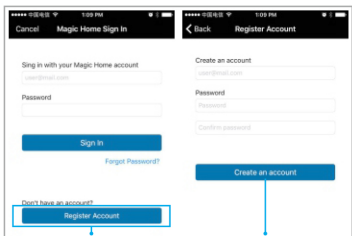


b) Add the controller's signal to the router for connection control.

When registering the account, please connect the controller's WIFI signal to the router (make sure the network is accessible)



⑬

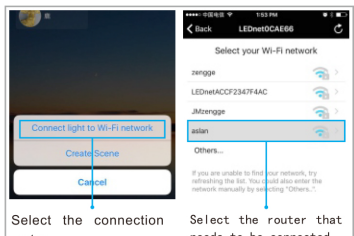


If you have a product account and password, you can choose to login directly, if not, you can choose to register your new account.

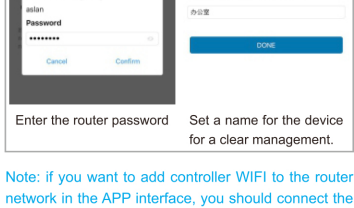


Select the WIFI controller that you need to add to the router (need to connect the controller WIFI first and then add it)

⑭



Select the connection router



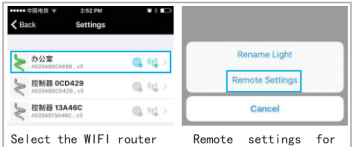
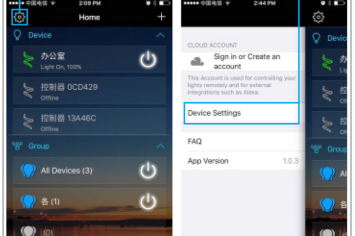
Enter the router password

Note: if you want to add controller WIFI to the router network in the APP interface, you should connect the controller signal in network connection first.

⑮

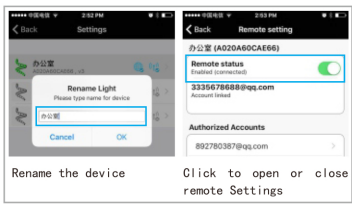
c) Remote connection settings.

When making remote settings, make sure the account is logged in properly

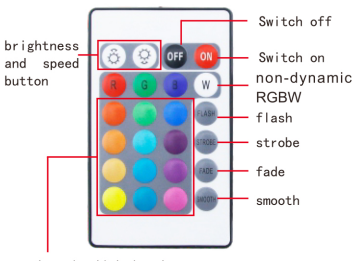


Select the WIFI router

⑯



24 key remote control button function description:



⑰

24-key infrared control instruction: (for controllers with infrared function)

- The default setting of the WIFI controller is 4 channels in the sequence of GRBW (sequence of GRB for RGB version, GRBWC for RGBWC version). If you want to change the output channel, the steps are as follows: repower the controller on; when the light flashes, long press the key G for 2 to 3s, the flickering white light means you've successfully change the output channel to GRBW; Similarly, long press key B will change the channel to BGRW sequence; long press key R to BGRW sequence.

- In the RGBW version, press W key for RGB and white light; long press W key for 2 seconds will switch to W channel.

⑱